

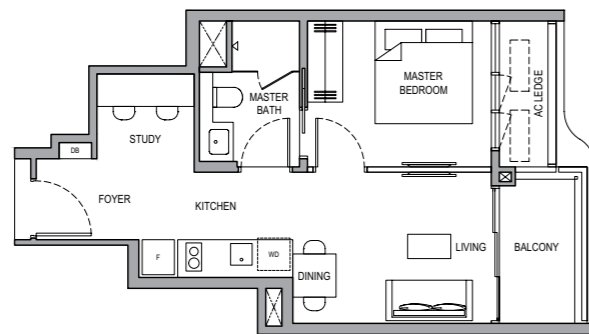
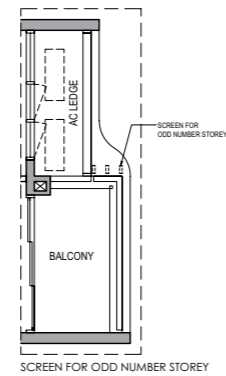
# 1-BEDROOM + STUDY

## TYPE 1BR + S (A)

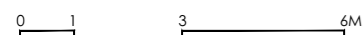
45 SQM / 484 SQFT  
(INCLUSIVE OF 5 SQM BALCONY)

BLOCK 1

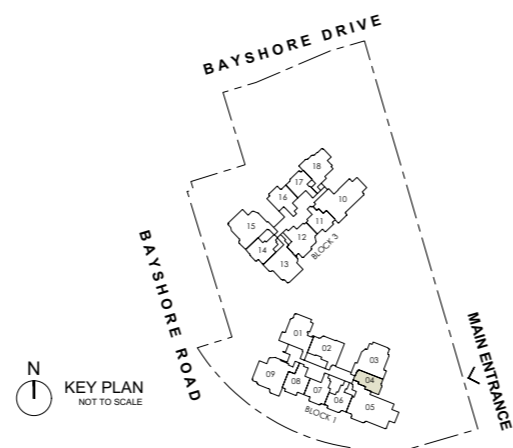
#05-04 to #31-04



- LEGEND:
- F FRIDGE
  - WD WASHER CUM DRYER
  - DB DISTRIBUTION BOARD
  - AC AIR-CONDITIONER (EXCLUDED FROM STRATA AREA)
  - RC REINFORCED CONCRETE (EXCLUDED FROM STRATA AREA)
  - ☐ VOID SPACE (EXCLUDED FROM STRATA AREA)
  - ☒ RAINWATER DOWNPIPE FOR BALCONY (EXCLUDED FROM STRATA AREA)
  - ▨ WALLS NOT ALLOWED TO BE HACKED / ALTERED / DRILLED
  - ☐ AIR CONDITIONING CONDENSING UNIT



ALL PLANS ARE SUBJECT TO CHANGES BY THE RELEVANT AUTHORITIES.  
MEASUREMENTS ARE APPROXIMATE ONLY AND SUBJECT TO FINAL SURVEY.  
INFORMATION ACCURATE AT POINT OF PRINTING.  
BP NO.: A1716-00045-2025-8P01 DATED 09-FEB-2026



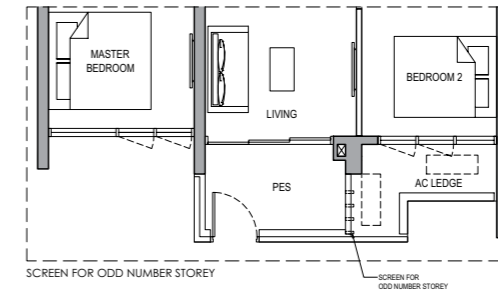
# 2-BEDROOM

## TYPE 2BR (A) PES

55 SQM / 592 SQFT  
(INCLUSIVE OF 5 SQM PES)

BLOCK 3

#01-11

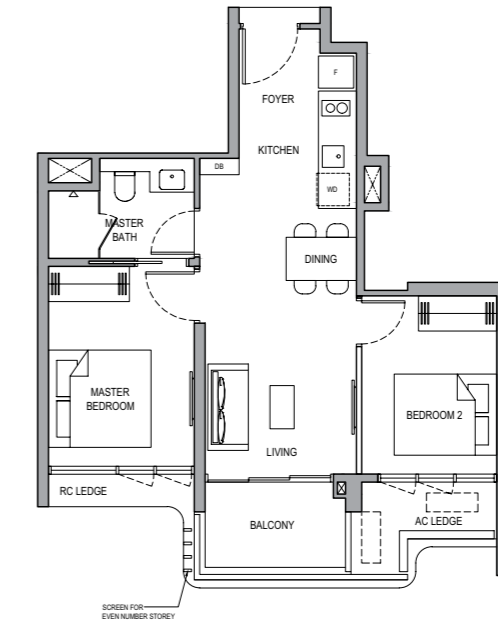


## TYPE 2BR (A)

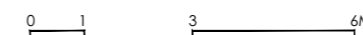
55 SQM / 592 SQFT  
(INCLUSIVE OF 5 SQM BALCONY)

BLOCK 3

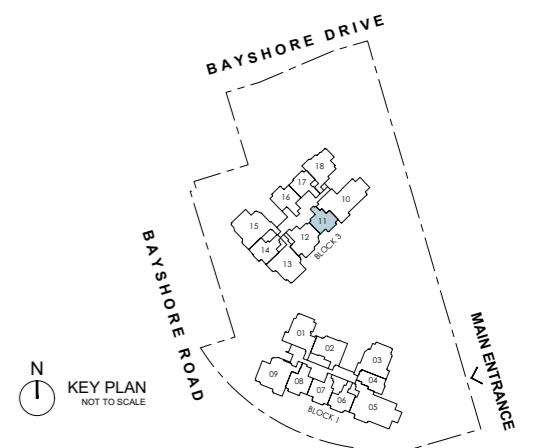
#02-11 to #30-11



- LEGEND:
- F FRIDGE
  - WD WASHER CUM DRYER
  - DB DISTRIBUTION BOARD
  - AC AIR-CONDITIONER (EXCLUDED FROM STRATA AREA)
  - RC REINFORCED CONCRETE (EXCLUDED FROM STRATA AREA)
  - ☐ VOID SPACE (EXCLUDED FROM STRATA AREA)
  - ☒ RAINWATER DOWNPIPE FOR BALCONY (EXCLUDED FROM STRATA AREA)
  - ▨ WALLS NOT ALLOWED TO BE HACKED / ALTERED / DRILLED
  - ☐ AIR CONDITIONING CONDENSING UNIT



ALL PLANS ARE SUBJECT TO CHANGES BY THE RELEVANT AUTHORITIES.  
MEASUREMENTS ARE APPROXIMATE ONLY AND SUBJECT TO FINAL SURVEY.  
INFORMATION ACCURATE AT POINT OF PRINTING.  
BP NO.: A1716-00045-2025-8P01 DATED 09-FEB-2026



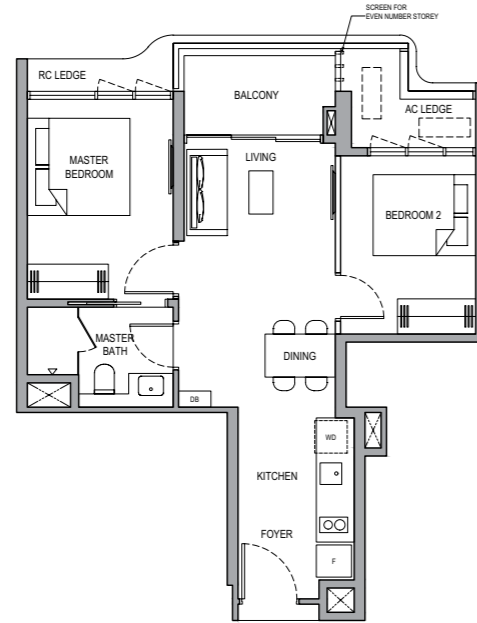
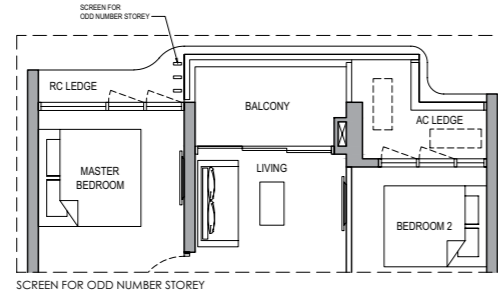
# 2-BEDROOM

## TYPE 2BR (B)

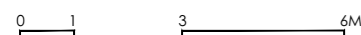
55 SQM / 592 SQFT  
(INCLUSIVE OF 5 SQM BALCONY)

BLOCK 3

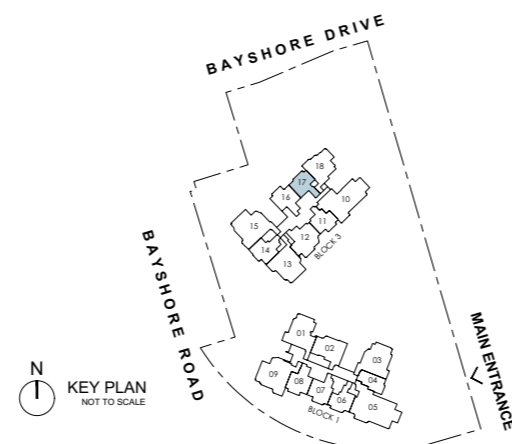
#03-17 to #30-17



- LEGEND:
- F FRIDGE
  - WD WASHER CUM DRYER
  - DB DISTRIBUTION BOARD
  - AC AIR-CONDITIONER (EXCLUDED FROM STRATA AREA)
  - RC REINFORCED CONCRETE (EXCLUDED FROM STRATA AREA)
  - VOID SPACE (EXCLUDED FROM STRATA AREA)
  - RAINWATER DOWNPIPE FOR BALCONY (EXCLUDED FROM STRATA AREA)
  - WALLS NOT ALLOWED TO BE HACKED / ALTERED / DRILLED
  - AIR CONDITIONING CONDENSING UNIT



ALL PLANS ARE SUBJECT TO CHANGES BY THE RELEVANT AUTHORITIES.  
MEASUREMENTS ARE APPROXIMATE ONLY AND SUBJECT TO FINAL SURVEY.  
INFORMATION ACCURATE AT POINT OF PRINTING.  
BP NO.: A1716-00045-2025-8P01 DATED 09-FEB-2026



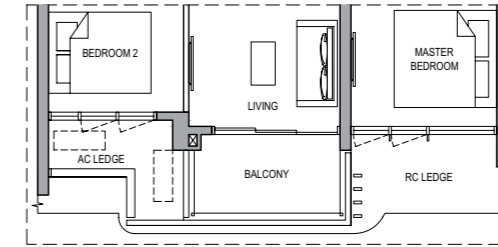
# 2-BEDROOM

## TYPE 2BR (C)

55 SQM / 592 SQFT  
(INCLUSIVE OF 5 SQM BALCONY)

BLOCK 1

#05-06

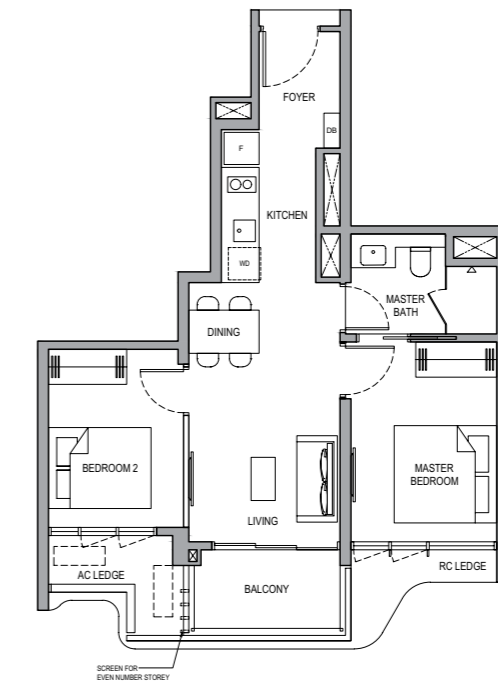
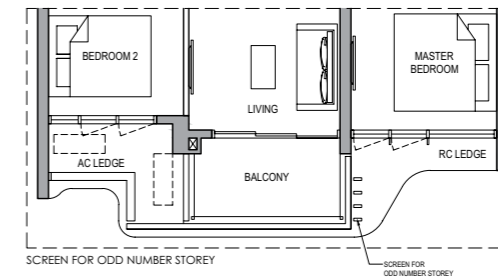


## TYPE 2BR (C)

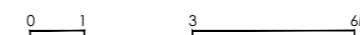
55 SQM / 592 SQFT  
(INCLUSIVE OF 5 SQM BALCONY)

BLOCK 1

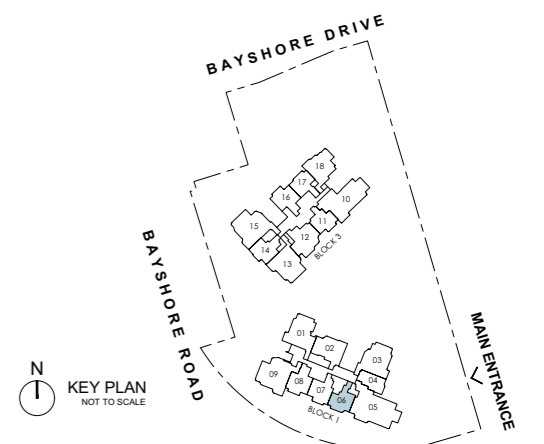
#06-06 to #30-06



- LEGEND:
- F FRIDGE
  - WD WASHER CUM DRYER
  - DB DISTRIBUTION BOARD
  - AC AIR-CONDITIONER (EXCLUDED FROM STRATA AREA)
  - RC REINFORCED CONCRETE (EXCLUDED FROM STRATA AREA)
  - VOID SPACE (EXCLUDED FROM STRATA AREA)
  - RAINWATER DOWNPIPE FOR BALCONY (EXCLUDED FROM STRATA AREA)
  - WALLS NOT ALLOWED TO BE HACKED / ALTERED / DRILLED
  - AIR CONDITIONING CONDENSING UNIT



ALL PLANS ARE SUBJECT TO CHANGES BY THE RELEVANT AUTHORITIES.  
MEASUREMENTS ARE APPROXIMATE ONLY AND SUBJECT TO FINAL SURVEY.  
INFORMATION ACCURATE AT POINT OF PRINTING.  
BP NO.: A1716-00045-2025-8P01 DATED 09-FEB-2026

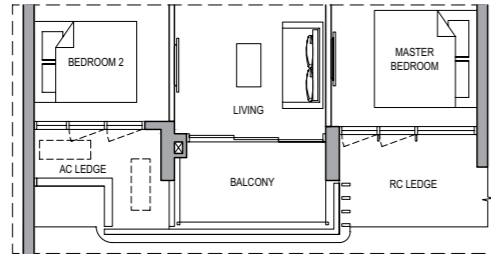


# 2-BEDROOM PREMIUM

## TYPE 2BR P (A)

64 SQM / 689 SQFT  
(INCLUSIVE OF 5 SQM BALCONY)

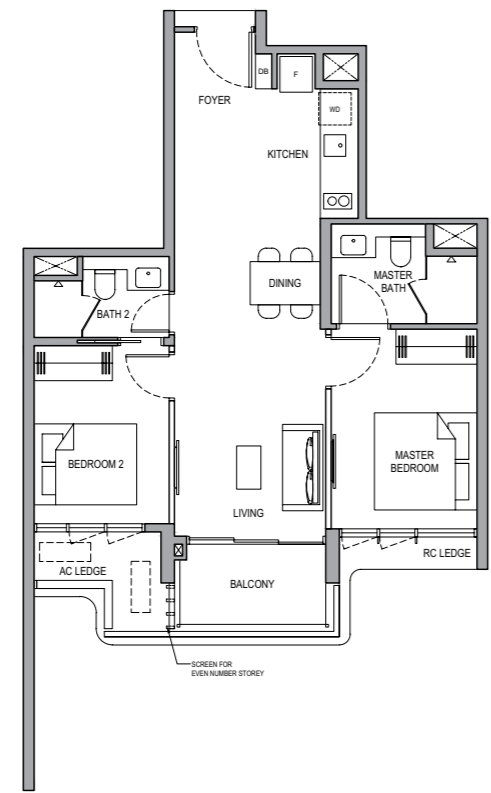
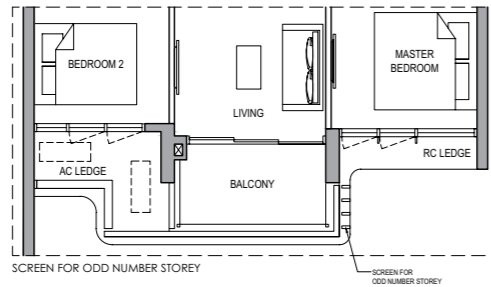
BLOCK 1  
#05-08



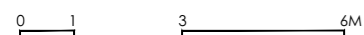
## TYPE 2BR P (A)

64 SQM / 689 SQFT  
(INCLUSIVE OF 5 SQM BALCONY)

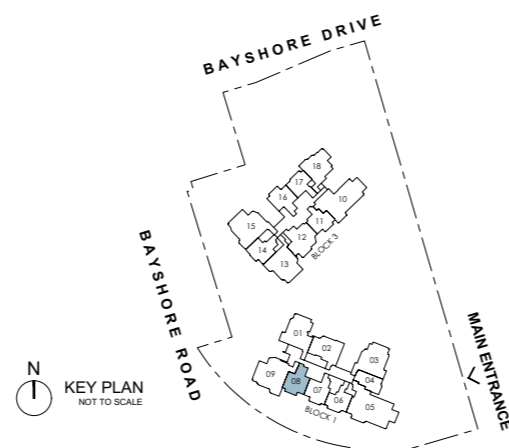
BLOCK 1  
#06-08 to #31-08



- LEGEND:
- F FRIDGE
  - WD WASHER CUM DRYER
  - DB DISTRIBUTION BOARD
  - AC AIR-CONDITIONER (EXCLUDED FROM STRATA AREA)
  - RC REINFORCED CONCRETE (EXCLUDED FROM STRATA AREA)
  - VOID SPACE (EXCLUDED FROM STRATA AREA)
  - RAINWATER DOWNPIPE FOR BALCONY (EXCLUDED FROM STRATA AREA)
  - WALLS NOT ALLOWED TO BE HACKED / ALTERED / DRILLED
  - AIR CONDITIONING CONDENSING UNIT



ALL PLANS ARE SUBJECT TO CHANGES BY THE RELEVANT AUTHORITIES.  
MEASUREMENTS ARE APPROXIMATE ONLY AND SUBJECT TO FINAL SURVEY.  
INFORMATION ACCURATE AT POINT OF PRINTING.  
BP NO.: A1716-00045-2025-8P01 DATED 09-FEB-2025

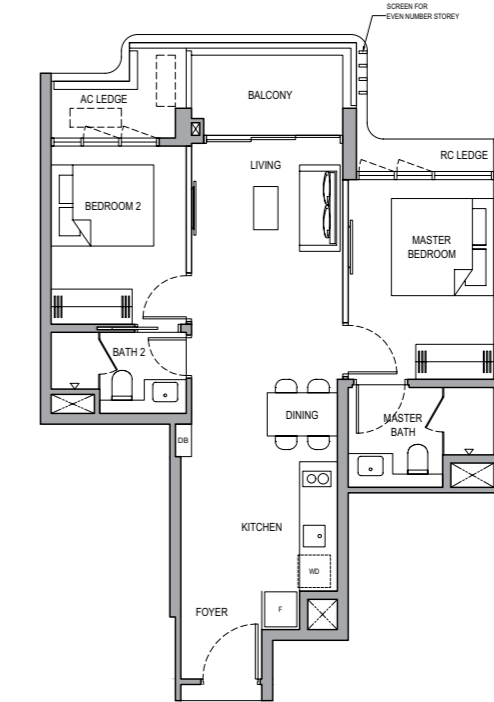
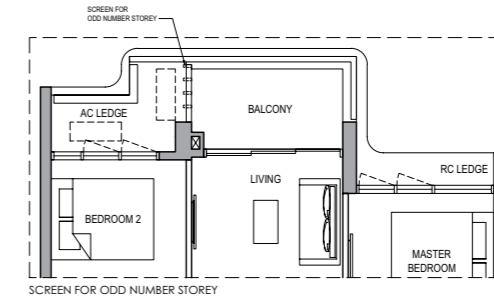


# 2-BEDROOM PREMIUM

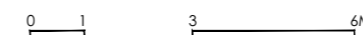
## TYPE 2BR P (B)

64 SQM / 689 SQFT  
(INCLUSIVE OF 5 SQM BALCONY)

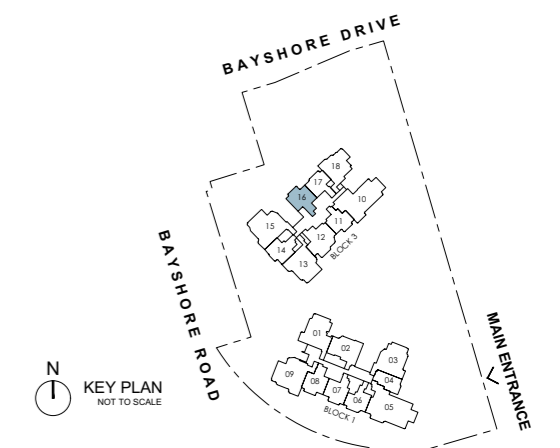
BLOCK 3  
#03-16 to #30-16



- LEGEND:
- F FRIDGE
  - WD WASHER CUM DRYER
  - DB DISTRIBUTION BOARD
  - AC AIR-CONDITIONER (EXCLUDED FROM STRATA AREA)
  - RC REINFORCED CONCRETE (EXCLUDED FROM STRATA AREA)
  - VOID SPACE (EXCLUDED FROM STRATA AREA)
  - RAINWATER DOWNPIPE FOR BALCONY (EXCLUDED FROM STRATA AREA)
  - WALLS NOT ALLOWED TO BE HACKED / ALTERED / DRILLED
  - AIR CONDITIONING CONDENSING UNIT



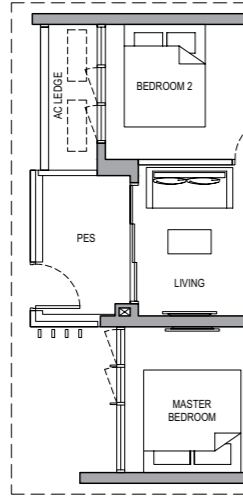
ALL PLANS ARE SUBJECT TO CHANGES BY THE RELEVANT AUTHORITIES.  
MEASUREMENTS ARE APPROXIMATE ONLY AND SUBJECT TO FINAL SURVEY.  
INFORMATION ACCURATE AT POINT OF PRINTING.  
BP NO.: A1716-00045-2025-8P01 DATED 09-FEB-2025



# 2-BEDROOM PREMIUM

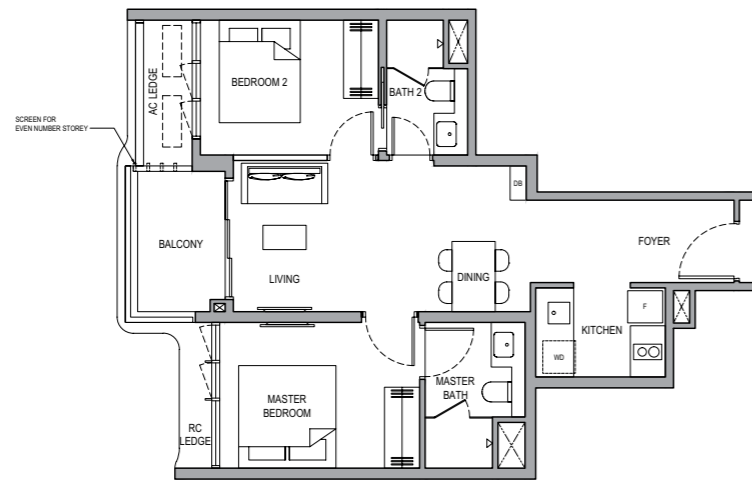
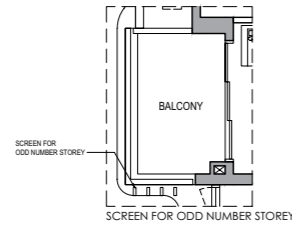
**TYPE 2BR P (C) PES**  
63 SQM / 678 SQFT  
(INCLUSIVE OF 5 SQM PES)

**BLOCK 3**  
#01-14

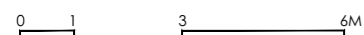


**TYPE 2BR P (C)**  
63 SQM / 678 SQFT  
(INCLUSIVE OF 5 SQM BALCONY)

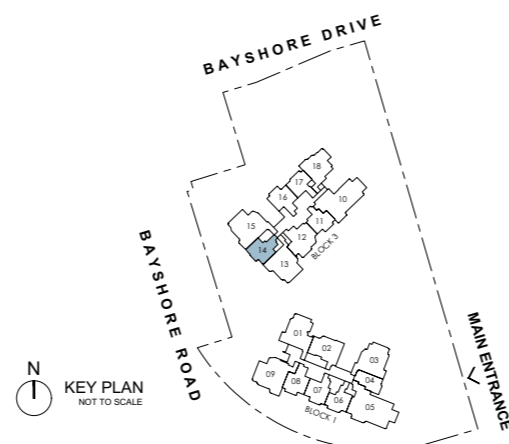
**BLOCK 3**  
#02-14 to #31-14



- LEGEND:**
- F FRIDGE
  - WD WASHER CUM DRYER
  - DB DISTRIBUTION BOARD
  - AC AIR-CONDITIONER (EXCLUDED FROM STRATA AREA)
  - RC REINFORCED CONCRETE (EXCLUDED FROM STRATA AREA)
  - VOID SPACE (EXCLUDED FROM STRATA AREA)
  - RAINWATER DOWNPIPE FOR BALCONY (EXCLUDED FROM STRATA AREA)
  - WALLS NOT ALLOWED TO BE HACKED / ALTERED / DRILLED
  - AIR CONDITIONING CONDENSING UNIT



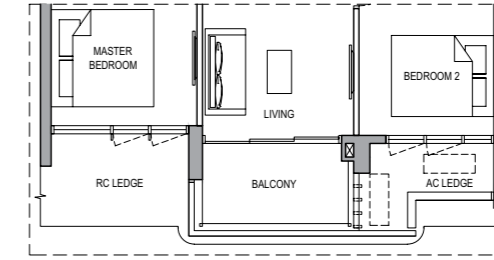
ALL PLANS ARE SUBJECT TO CHANGES BY THE RELEVANT AUTHORITIES.  
MEASUREMENTS ARE APPROXIMATE ONLY AND SUBJECT TO FINAL SURVEY.  
INFORMATION ACCURATE AT POINT OF PRINTING.  
BP NO.: A1716-00045-2025-8P01 DATED 09-FEB-2026



# 2-BEDROOM PREMIUM

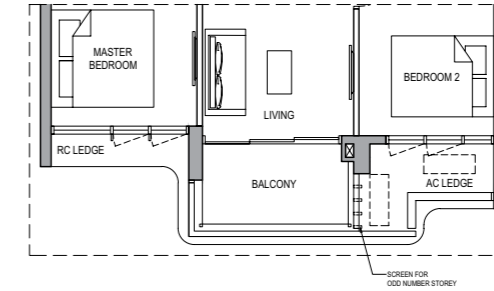
**TYPE 2BR P (D)**  
63 SQM / 678 SQFT  
(INCLUSIVE OF 5 SQM BALCONY)

**BLOCK 1**  
#05-07

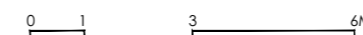


**TYPE 2BR P (D)**  
63 SQM / 678 SQFT  
(INCLUSIVE OF 5 SQM BALCONY)

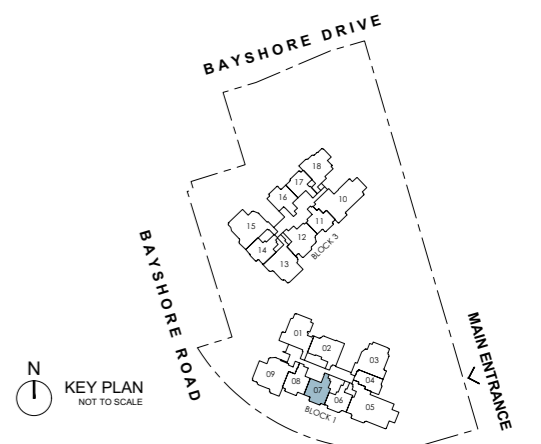
**BLOCK 1**  
#06-07 to #31-07



- LEGEND:**
- F FRIDGE
  - WD WASHER CUM DRYER
  - DB DISTRIBUTION BOARD
  - AC AIR-CONDITIONER (EXCLUDED FROM STRATA AREA)
  - RC REINFORCED CONCRETE (EXCLUDED FROM STRATA AREA)
  - VOID SPACE (EXCLUDED FROM STRATA AREA)
  - RAINWATER DOWNPIPE FOR BALCONY (EXCLUDED FROM STRATA AREA)
  - WALLS NOT ALLOWED TO BE HACKED / ALTERED / DRILLED
  - AIR CONDITIONING CONDENSING UNIT



ALL PLANS ARE SUBJECT TO CHANGES BY THE RELEVANT AUTHORITIES.  
MEASUREMENTS ARE APPROXIMATE ONLY AND SUBJECT TO FINAL SURVEY.  
INFORMATION ACCURATE AT POINT OF PRINTING.  
BP NO.: A1716-00045-2025-8P01 DATED 09-FEB-2026



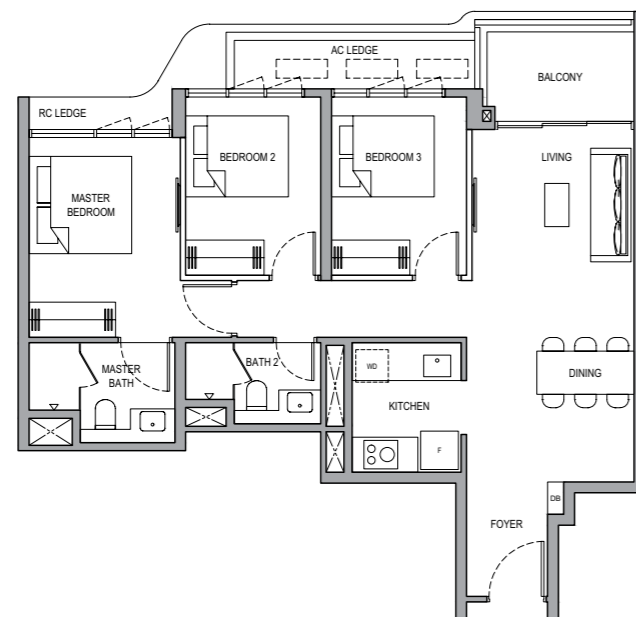
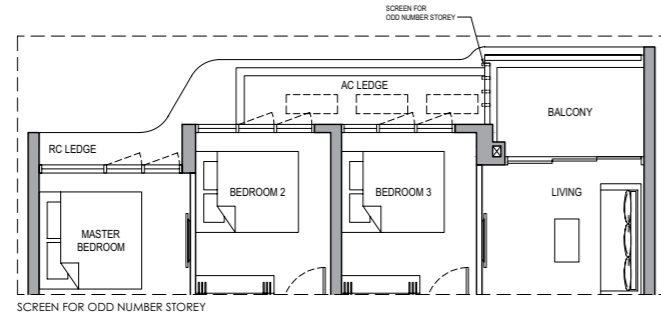
# 3-BEDROOM

## TYPE 3BR (A)

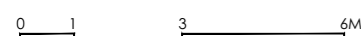
82 SQM / 883 SQFT  
(INCLUSIVE OF 6 SQM BALCONY)

BLOCK 1

#05-02 to #30-02



- LEGEND:
- F FRIDGE
  - WD WASHER CUM DRYER
  - DB DISTRIBUTION BOARD
  - AC AIR-CONDITIONER (EXCLUDED FROM STRATA AREA)
  - RC REINFORCED CONCRETE (EXCLUDED FROM STRATA AREA)
  - VOID SPACE (EXCLUDED FROM STRATA AREA)
  - RAINWATER DOWNPIPE FOR BALCONY (EXCLUDED FROM STRATA AREA)
  - WALLS NOT ALLOWED TO BE HACKED / ALTERED / DRILLED
  - AIR CONDITIONING CONDENSING UNIT



ALL PLANS ARE SUBJECT TO CHANGES BY THE RELEVANT AUTHORITIES.  
MEASUREMENTS ARE APPROXIMATE ONLY AND SUBJECT TO FINAL SURVEY.  
INFORMATION ACCURATE AT POINT OF PRINTING.  
BP NO.: A1716-00045-2025-8P01 DATED 09-FEB-2026



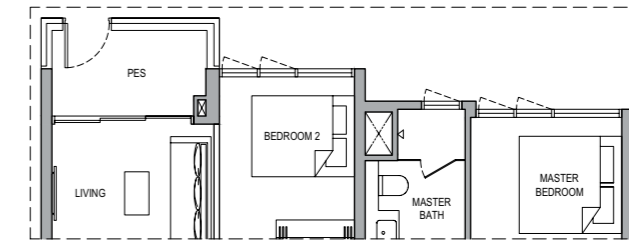
# 3-BEDROOM

## TYPE 3BR (B) PES

83 SQM / 893 SQFT  
(INCLUSIVE OF 6 SQM PES)

BLOCK 3

#01-18

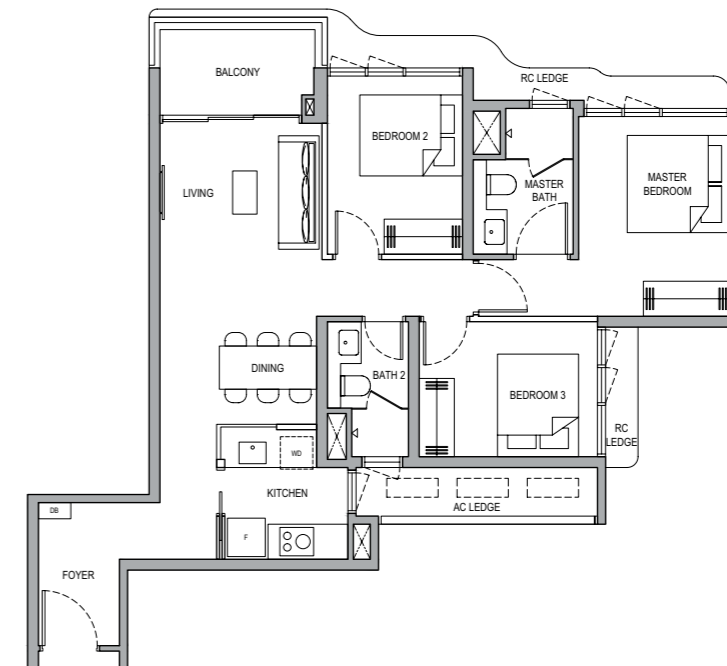


## TYPE 3BR (B)

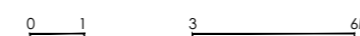
83 SQM / 893 SQFT  
(INCLUSIVE OF 6 SQM BALCONY)

BLOCK 3

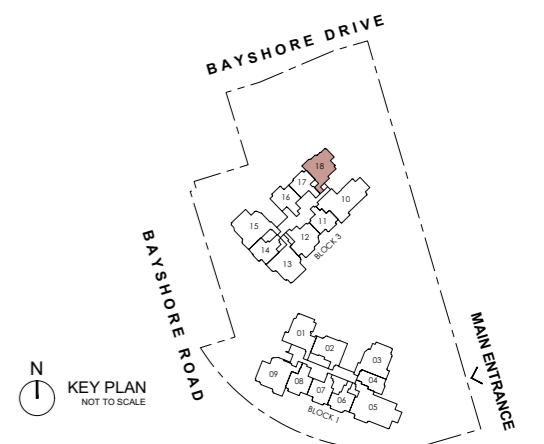
#02-18 to #30-18



- LEGEND:
- F FRIDGE
  - WD WASHER CUM DRYER
  - DB DISTRIBUTION BOARD
  - AC AIR-CONDITIONER (EXCLUDED FROM STRATA AREA)
  - RC REINFORCED CONCRETE (EXCLUDED FROM STRATA AREA)
  - VOID SPACE (EXCLUDED FROM STRATA AREA)
  - RAINWATER DOWNPIPE FOR BALCONY (EXCLUDED FROM STRATA AREA)
  - WALLS NOT ALLOWED TO BE HACKED / ALTERED / DRILLED
  - AIR CONDITIONING CONDENSING UNIT



ALL PLANS ARE SUBJECT TO CHANGES BY THE RELEVANT AUTHORITIES.  
MEASUREMENTS ARE APPROXIMATE ONLY AND SUBJECT TO FINAL SURVEY.  
INFORMATION ACCURATE AT POINT OF PRINTING.  
BP NO.: A1716-00045-2025-8P01 DATED 09-FEB-2026

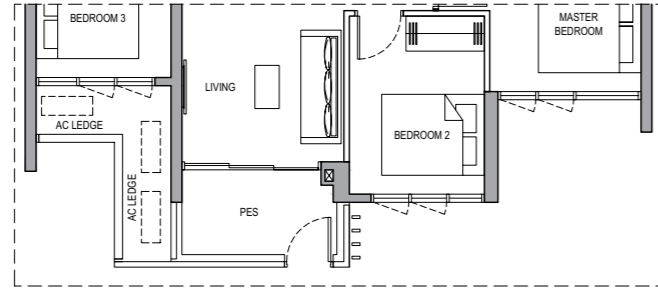


# 3-BEDROOM

## TYPE 3BR (C) PES

82 SQM / 883 SQFT  
(INCLUSIVE OF 6 SQM PES)

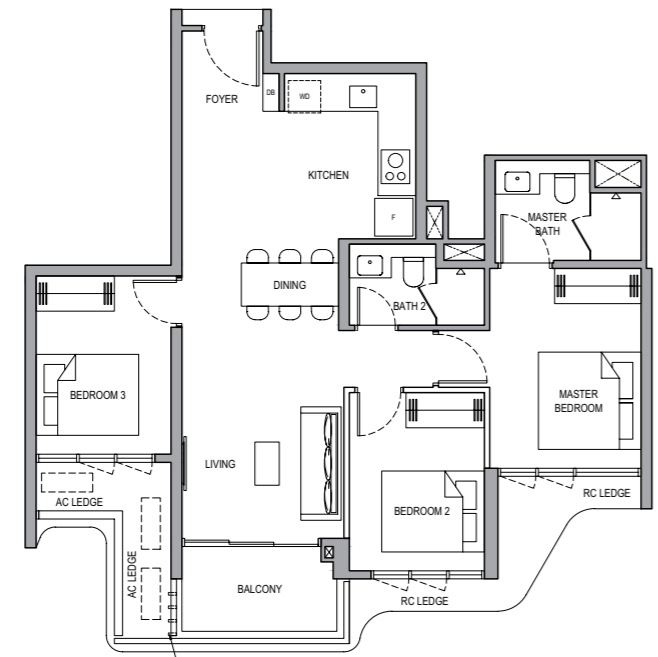
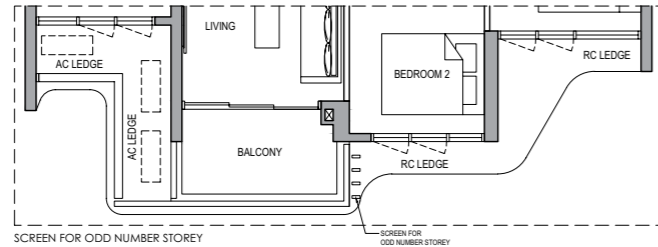
BLOCK 3  
#01-12



## TYPE 3BR (C)

82 SQM / 883 SQFT  
(INCLUSIVE OF 6 SQM BALCONY)

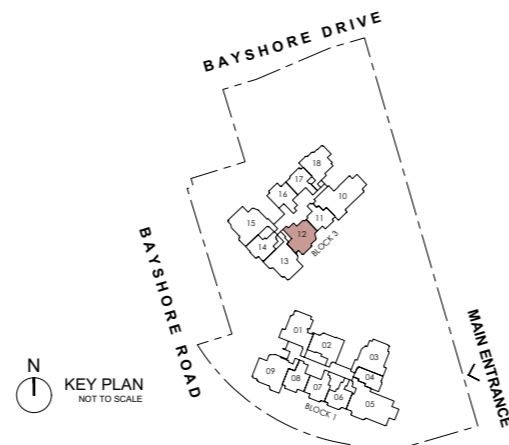
BLOCK 3  
#02-12 to #31-12



- LEGEND:
- F FRIDGE
  - W/D WASHER CUM DRYER
  - DB DISTRIBUTION BOARD
  - AC AIR-CONDITIONER (EXCLUDED FROM STRATA AREA)
  - RC REINFORCED CONCRETE (EXCLUDED FROM STRATA AREA)
  - VOID SPACE (EXCLUDED FROM STRATA AREA)
  - RAINWATER DOWNPIPE FOR BALCONY (EXCLUDED FROM STRATA AREA)
  - WALLS NOT ALLOWED TO BE HACKED / ALTERED / DRILLED
  - AIR CONDITIONING CONDENSING UNIT

0 1 3 6M

ALL PLANS ARE SUBJECT TO CHANGES BY THE RELEVANT AUTHORITIES.  
MEASUREMENTS ARE APPROXIMATE ONLY AND SUBJECT TO FINAL SURVEY.  
INFORMATION ACCURATE AT POINT OF PRINTING.  
BP NO.: A1716-00045-2025-8P01 DATED 09-FEB-2026

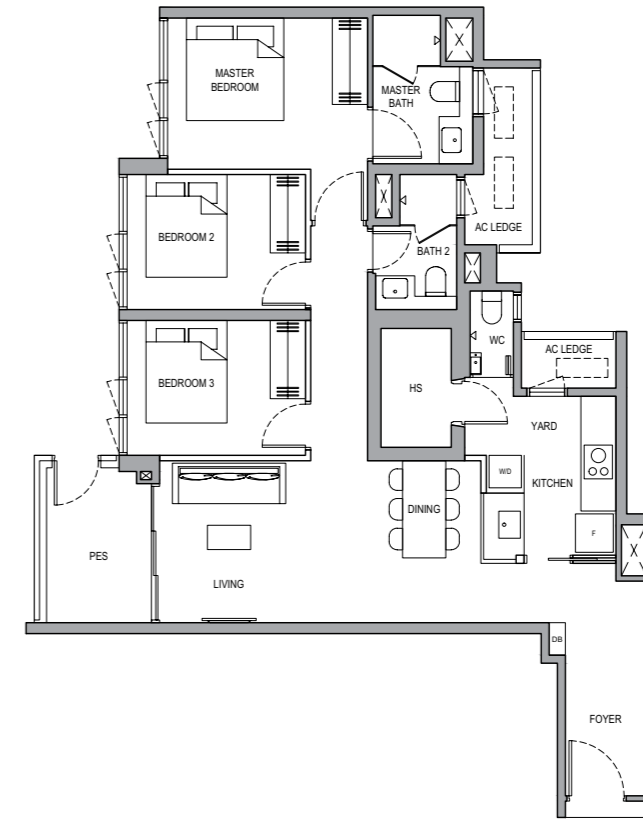


# 3-BEDROOM PREMIUM

## TYPE 3BR P (A) PES

96 SQM / 1,033 SQFT  
(INCLUSIVE OF 7 SQM PES)

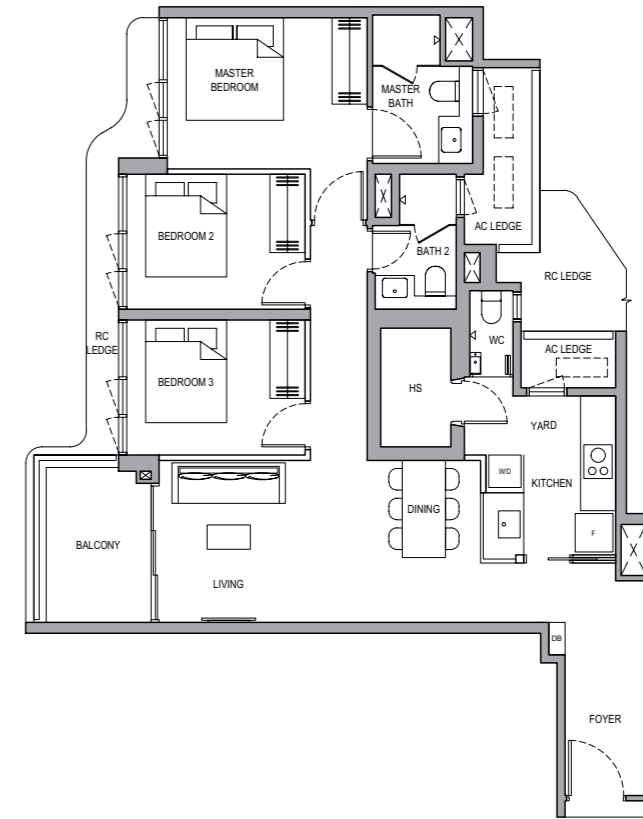
BLOCK 1  
#01-01



## TYPE 3BR P (A)

96 SQM / 1,033 SQFT  
(INCLUSIVE OF 7 SQM BALCONY)

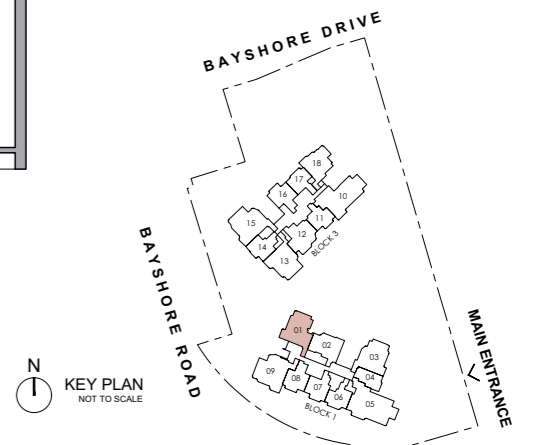
BLOCK 1  
#02-01 to #30-01



- LEGEND:
- F FRIDGE
  - W/D WASHER AND DRYER
  - DB DISTRIBUTION BOARD
  - WC WATER CLOSET
  - HS HOUSEHOLD SHELTER
  - AC AIR-CONDITIONER (EXCLUDED FROM STRATA AREA)
  - RC REINFORCED CONCRETE (EXCLUDED FROM STRATA AREA)
  - VOID SPACE (EXCLUDED FROM STRATA AREA)
  - RAINWATER DOWNPIPE FOR BALCONY (EXCLUDED FROM STRATA AREA)
  - WALLS NOT ALLOWED TO BE HACKED / ALTERED / DRILLED
  - AIR CONDITIONING CONDENSING UNIT

0 1 3 6M

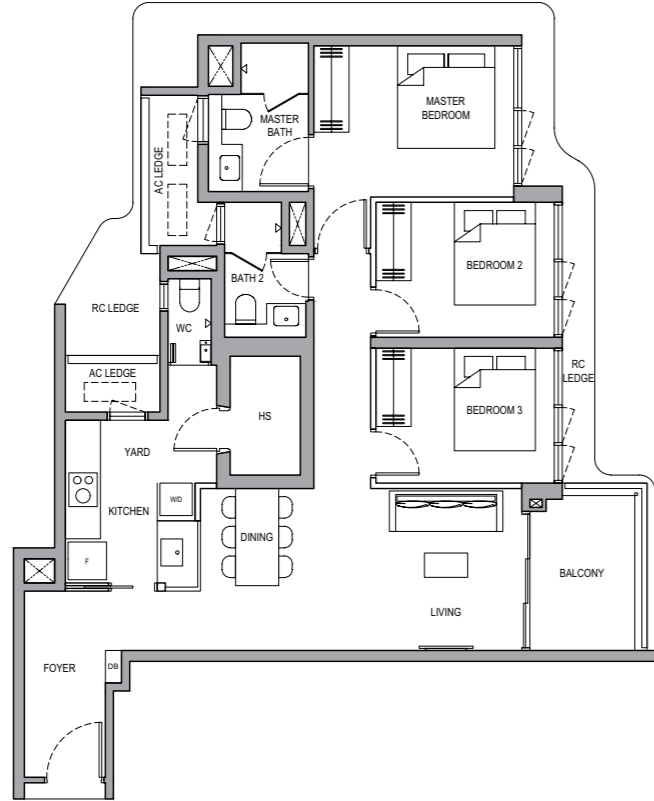
ALL PLANS ARE SUBJECT TO CHANGES BY THE RELEVANT AUTHORITIES.  
MEASUREMENTS ARE APPROXIMATE ONLY AND SUBJECT TO FINAL SURVEY.  
INFORMATION ACCURATE AT POINT OF PRINTING.  
BP NO.: A1716-00045-2025-8P01 DATED 09-FEB-2026



# 3-BEDROOM PREMIUM

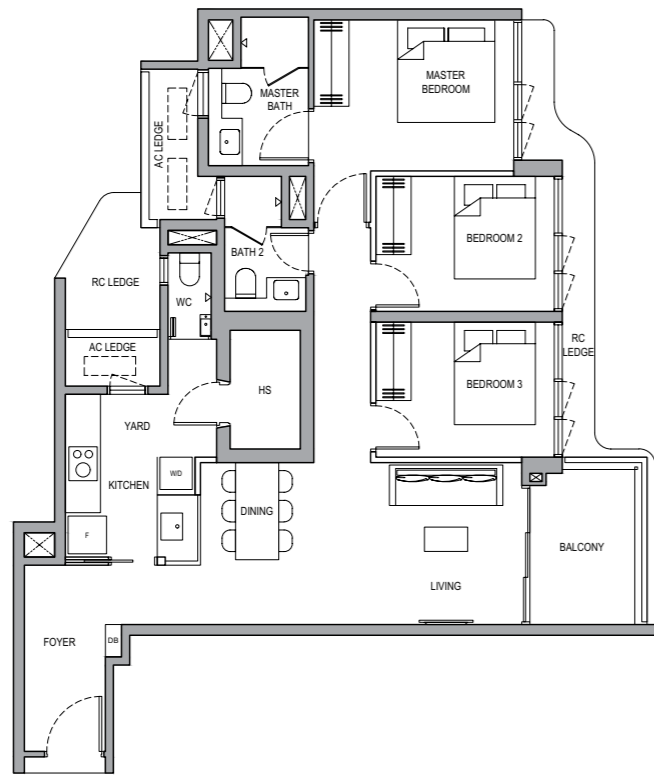
**TYPE 3BR P (B)**  
96 SQM / 1,033 SQFT  
(INCLUSIVE OF 7 SQM BALCONY)

**BLOCK 1**  
#05-03

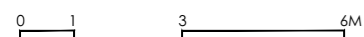


**TYPE 3BR P (B)**  
96 SQM / 1,033 SQFT  
(INCLUSIVE OF 7 SQM BALCONY)

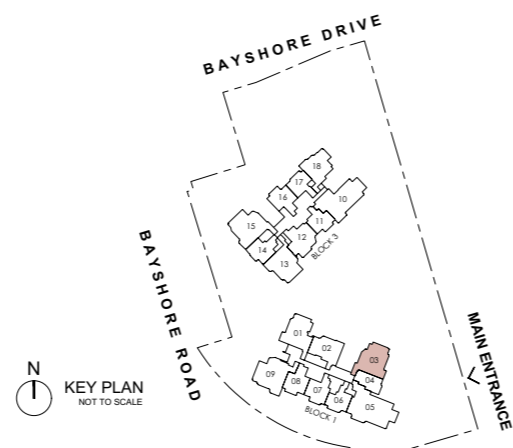
**BLOCK 1**  
#06-03 to #31-03



- LEGEND:
- F FRIDGE
  - W/D WASHER AND DRYER
  - DB DISTRIBUTION BOARD
  - WC WATER CLOSET
  - HS HOUSEHOLD SHELTER
  - AC AIR-CONDITIONER (EXCLUDED FROM STRATA AREA)
  - RC REINFORCED CONCRETE (EXCLUDED FROM STRATA AREA)
  - ⊠ VOID SPACE (EXCLUDED FROM STRATA AREA)
  - ⊡ RAINWATER DOWNPIPE FOR BALCONY (EXCLUDED FROM STRATA AREA)
  - ▨ WALLS NOT ALLOWED TO BE HACKED / ALTERED / DRILLED
  - ⊞ AIR CONDITIONING CONDENSING UNIT



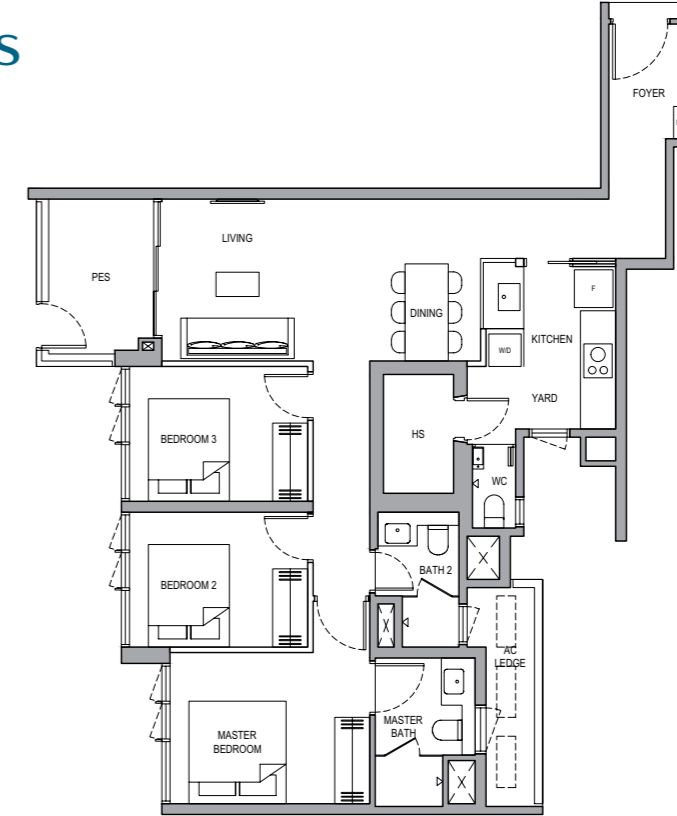
ALL PLANS ARE SUBJECT TO CHANGES BY THE RELEVANT AUTHORITIES.  
MEASUREMENTS ARE APPROXIMATE ONLY AND SUBJECT TO FINAL SURVEY.  
INFORMATION ACCURATE AT POINT OF PRINTING.  
BP NO.: A1716-00045-2025-8P01 DATED 09-FEB-2026



# 3-BEDROOM PREMIUM

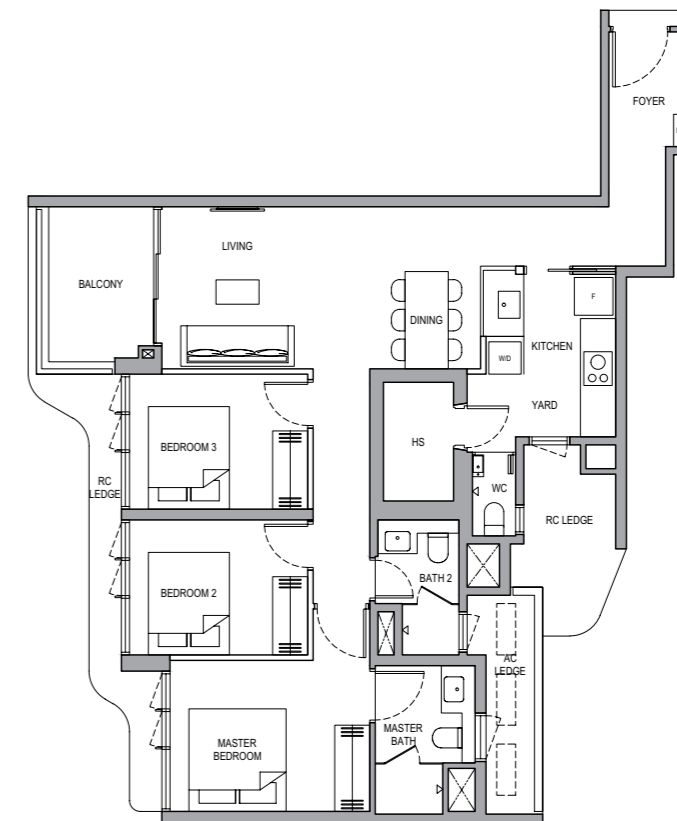
**TYPE 3BR P (C) PES**  
96 SQM / 1,033 SQFT  
(INCLUSIVE OF 7 SQM PES)

**BLOCK 3**  
#01-13

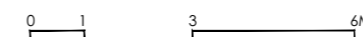


**TYPE 3BR P (C)**  
96 SQM / 1,033 SQFT  
(INCLUSIVE OF 7 SQM BALCONY)

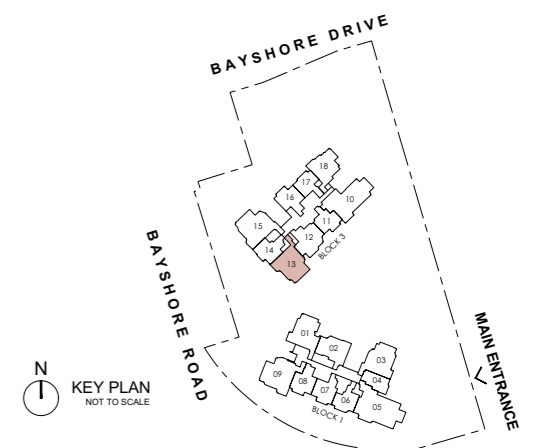
**BLOCK 3**  
#02-13 to #31-13



- LEGEND:
- F FRIDGE
  - W/D WASHER AND DRYER
  - DB DISTRIBUTION BOARD
  - WC WATER CLOSET
  - HS HOUSEHOLD SHELTER
  - AC AIR-CONDITIONER (EXCLUDED FROM STRATA AREA)
  - RC REINFORCED CONCRETE (EXCLUDED FROM STRATA AREA)
  - ⊠ VOID SPACE (EXCLUDED FROM STRATA AREA)
  - ⊡ RAINWATER DOWNPIPE FOR BALCONY (EXCLUDED FROM STRATA AREA)
  - ▨ WALLS NOT ALLOWED TO BE HACKED / ALTERED / DRILLED
  - ⊞ AIR CONDITIONING CONDENSING UNIT



ALL PLANS ARE SUBJECT TO CHANGES BY THE RELEVANT AUTHORITIES.  
MEASUREMENTS ARE APPROXIMATE ONLY AND SUBJECT TO FINAL SURVEY.  
INFORMATION ACCURATE AT POINT OF PRINTING.  
BP NO.: A1716-00045-2025-8P01 DATED 09-FEB-2026

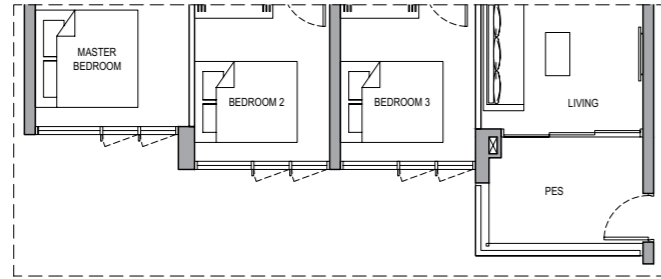


# 4-BEDROOM

## TYPE 4BR (A) PES

109 SQM / 1,173 SQFT  
(INCLUSIVE OF 7 SQM PES)

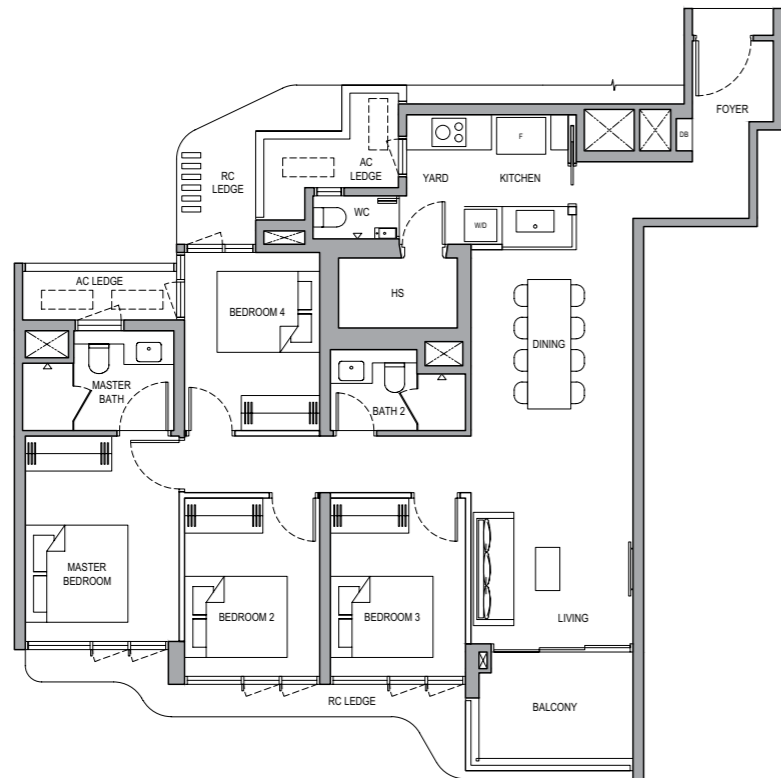
BLOCK 1  
#01-09



## TYPE 4BR (A)

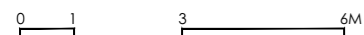
109 SQM / 1,173 SQFT  
(INCLUSIVE OF 7 SQM BALCONY)

BLOCK 1  
#02-09 to #31-09

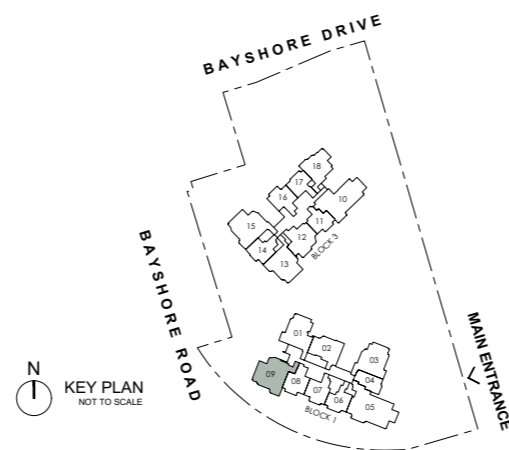


LEGEND:

- F FRIDGE
- W/D WASHER AND DRYER
- DB DISTRIBUTION BOARD
- WC WATER CLOSET
- HS HOUSEHOLD SHELTER
- AC AIR-CONDITIONER (EXCLUDED FROM STRATA AREA)
- RC REINFORCED CONCRETE (EXCLUDED FROM STRATA AREA)
- ⊠ VOID SPACE (EXCLUDED FROM STRATA AREA)
- ⊠ RAINWATER DOWNPIPE FOR BALCONY (EXCLUDED FROM STRATA AREA)
- ▨ WALLS NOT ALLOWED TO BE HACKED / ALTERED / DRILLED
- ⊠ AIR CONDITIONING CONDENSING UNIT



ALL PLANS ARE SUBJECT TO CHANGES BY THE RELEVANT AUTHORITIES.  
MEASUREMENTS ARE APPROXIMATE ONLY AND SUBJECT TO FINAL SURVEY.  
INFORMATION ACCURATE AT POINT OF PRINTING.  
BP NO.: A1716-00045-2025-8P01 DATED 09-FEB-2026

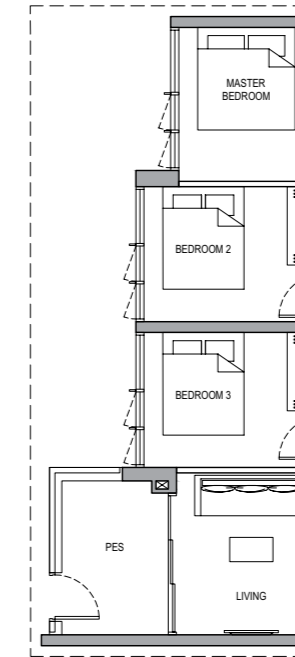


# 4-BEDROOM

## TYPE 4BR (B) PES

109 SQM / 1,173 SQFT  
(INCLUSIVE OF 7 SQM PES)

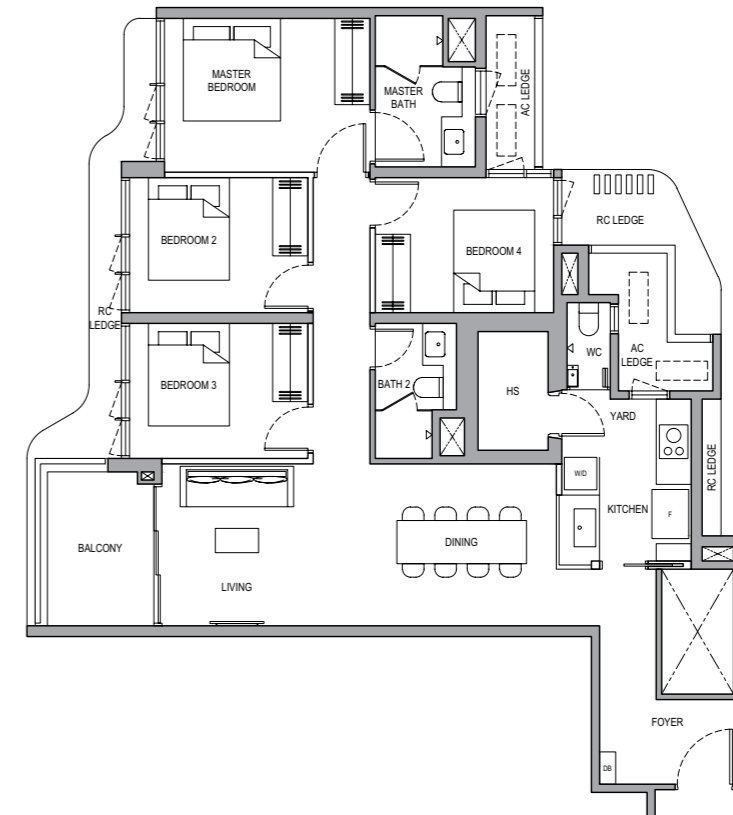
BLOCK 3  
#01-15



## TYPE 4BR (B)

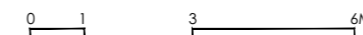
109 SQM / 1,173 SQFT  
(INCLUSIVE OF 7 SQM BALCONY)

BLOCK 3  
#02-15 to #31-15

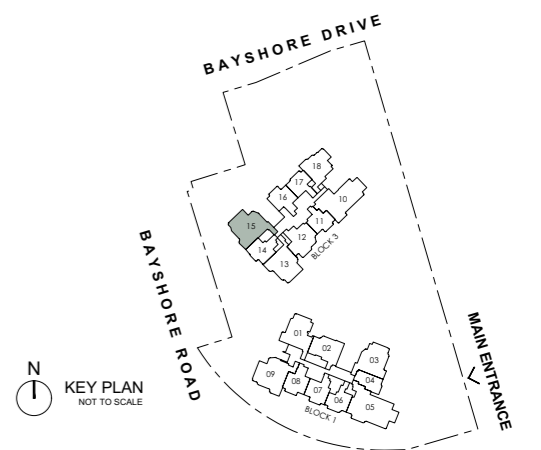


LEGEND:

- F FRIDGE
- W/D WASHER AND DRYER
- DB DISTRIBUTION BOARD
- WC WATER CLOSET
- HS HOUSEHOLD SHELTER
- AC AIR-CONDITIONER (EXCLUDED FROM STRATA AREA)
- RC REINFORCED CONCRETE (EXCLUDED FROM STRATA AREA)
- ⊠ VOID SPACE (EXCLUDED FROM STRATA AREA)
- ⊠ RAINWATER DOWNPIPE FOR BALCONY (EXCLUDED FROM STRATA AREA)
- ▨ WALLS NOT ALLOWED TO BE HACKED / ALTERED / DRILLED
- ⊠ AIR CONDITIONING CONDENSING UNIT



ALL PLANS ARE SUBJECT TO CHANGES BY THE RELEVANT AUTHORITIES.  
MEASUREMENTS ARE APPROXIMATE ONLY AND SUBJECT TO FINAL SURVEY.  
INFORMATION ACCURATE AT POINT OF PRINTING.  
BP NO.: A1716-00045-2025-8P01 DATED 09-FEB-2026

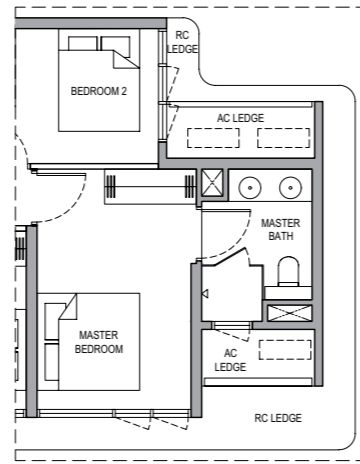


# 4-BEDROOM (PRIVATE LIFT)

## TYPE 4BR PL

128 SQM / 1,378 SQFT  
(INCLUSIVE OF 8 SQM BALCONY,  
4 SQM PRIVATE LIFT LOBBY)

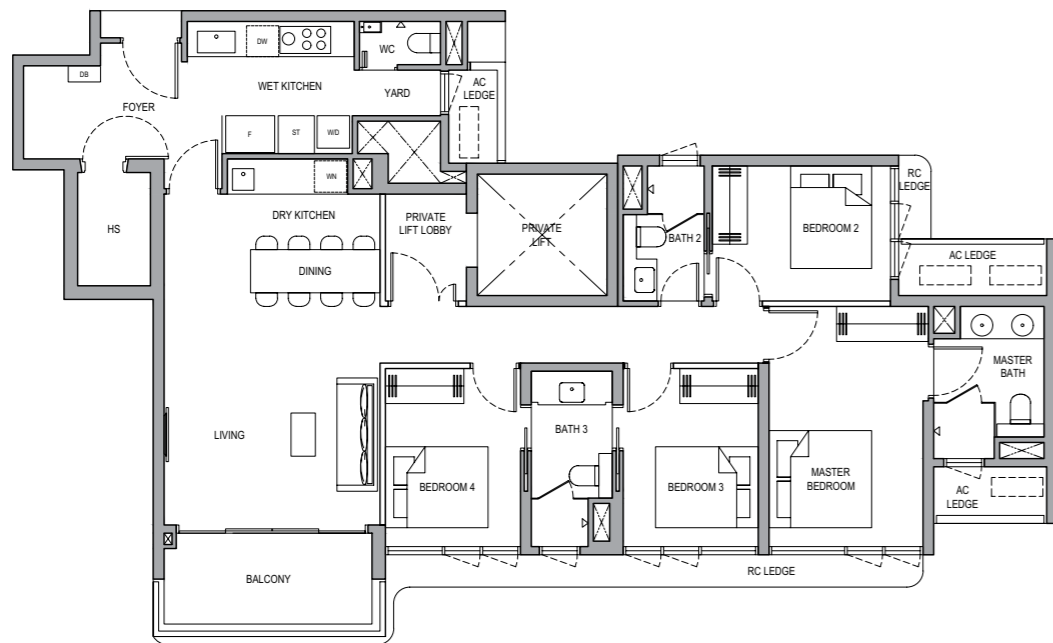
BLOCK 3  
#05-10



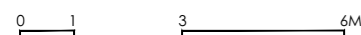
## TYPE 4BR PL

128 SQM / 1,378 SQFT  
(INCLUSIVE OF 8 SQM BALCONY,  
4 SQM PRIVATE LIFT LOBBY)

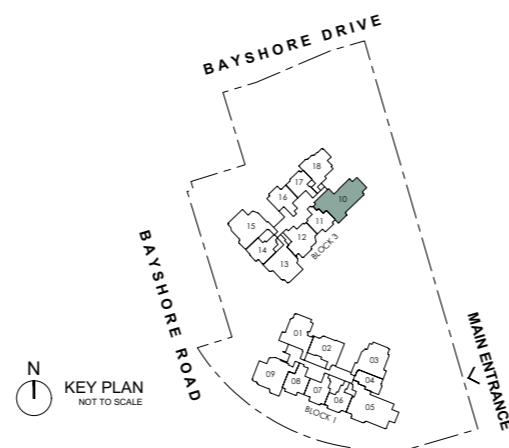
BLOCK 3  
#06-10 to #30-10



- LEGEND:
- F FRIDGE
  - W/D WASHER AND DRYER
  - DB DISTRIBUTION BOARD
  - ST STORE
  - WC WATER CLOSET
  - HS HOUSEHOLD SHELTER
  - WN WINE CHILLER
  - DW DISHWASHER
  - AC AIR-CONDITIONER (EXCLUDED FROM STRATA AREA)
  - RC REINFORCED CONCRETE (EXCLUDED FROM STRATA AREA)
  - VOID SPACE (EXCLUDED FROM STRATA AREA)
  - RAINWATER DOWNPIPE FOR BALCONY (EXCLUDED FROM STRATA AREA)
  - WALLS NOT ALLOWED TO BE HACKED / ALTERED / DRILLED
  - AIR CONDITIONING CONDENSING UNIT



ALL PLANS ARE SUBJECT TO CHANGES BY THE RELEVANT AUTHORITIES.  
MEASUREMENTS ARE APPROXIMATE ONLY AND SUBJECT TO FINAL SURVEY.  
INFORMATION ACCURATE AT POINT OF PRINTING.  
BP NO.: A1716-00045-2025-8P01 DATED 09-FEB-2026

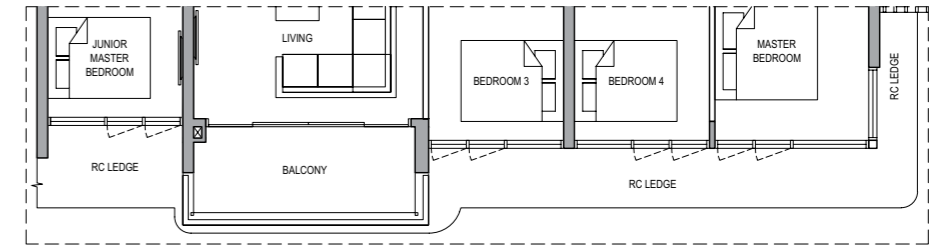


# 5-BEDROOM (PRIVATE LIFT)

## TYPE 5BR PL

147 SQM / 1,582 SQFT  
(INCLUSIVE OF 8 SQM BALCONY,  
4 SQM PRIVATE LIFT LOBBY)

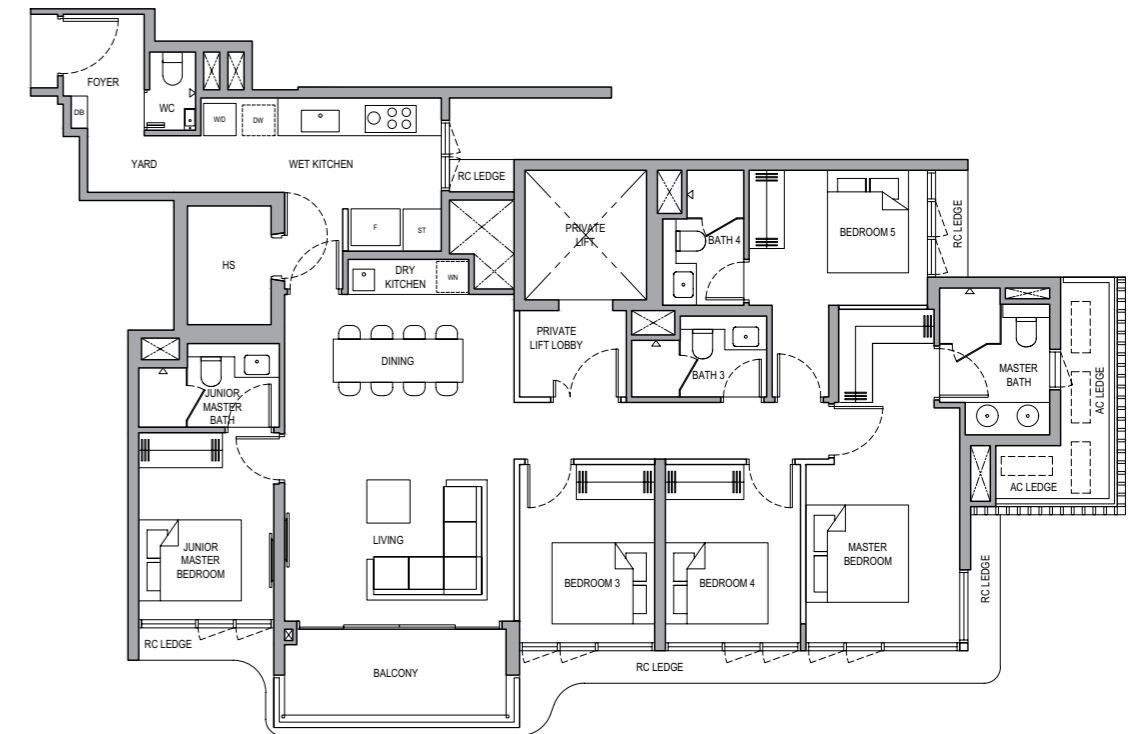
BLOCK 1  
#05-05



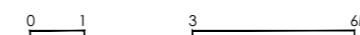
## TYPE 5BR PL

147 SQM / 1,582 SQFT  
(INCLUSIVE OF 8 SQM BALCONY,  
4 SQM PRIVATE LIFT LOBBY)

BLOCK 1  
#06-05 to #30-05



- LEGEND:
- F FRIDGE
  - W/D WASHER AND DRYER
  - DB DISTRIBUTION BOARD
  - ST STORE
  - WC WATER CLOSET
  - HS HOUSEHOLD SHELTER
  - WN WINE CHILLER
  - DW DISHWASHER
  - AC AIR-CONDITIONER (EXCLUDED FROM STRATA AREA)
  - RC REINFORCED CONCRETE (EXCLUDED FROM STRATA AREA)
  - VOID SPACE (EXCLUDED FROM STRATA AREA)
  - RAINWATER DOWNPIPE FOR BALCONY (EXCLUDED FROM STRATA AREA)
  - WALLS NOT ALLOWED TO BE HACKED / ALTERED / DRILLED
  - AIR CONDITIONING CONDENSING UNIT



ALL PLANS ARE SUBJECT TO CHANGES BY THE RELEVANT AUTHORITIES.  
MEASUREMENTS ARE APPROXIMATE ONLY AND SUBJECT TO FINAL SURVEY.  
INFORMATION ACCURATE AT POINT OF PRINTING.  
BP NO.: A1716-00045-2025-8P01 DATED 09-FEB-2026

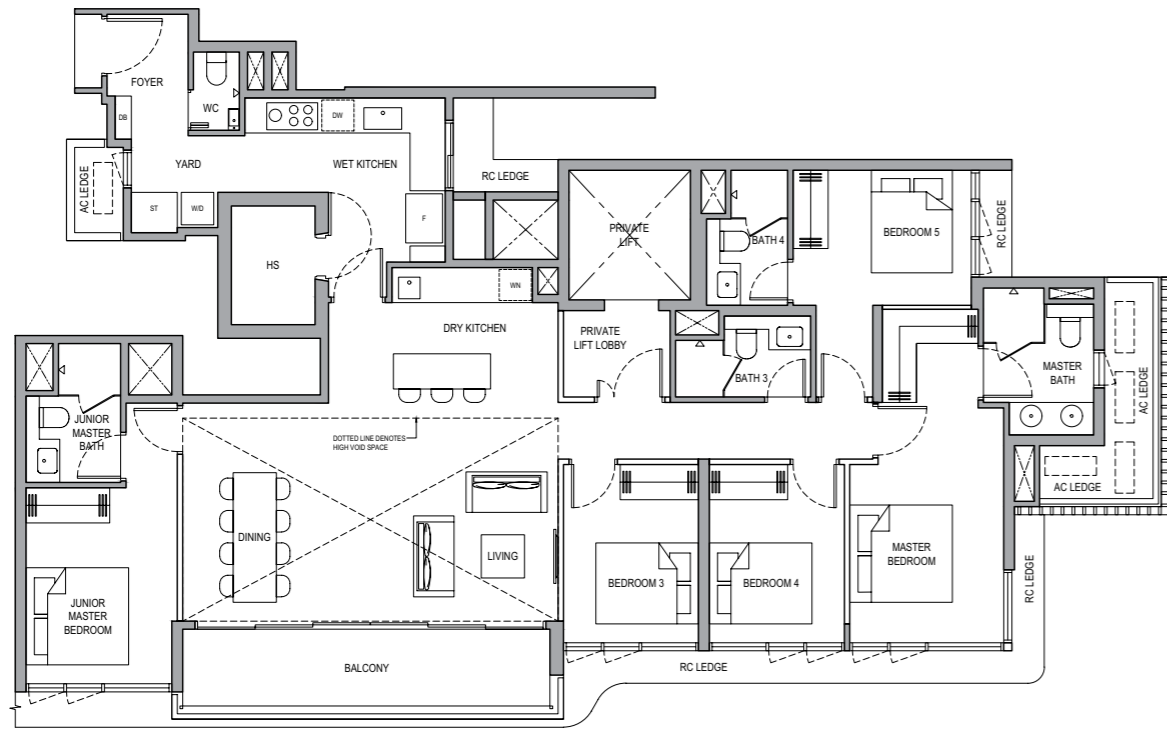


# PENTHOUSE 1

## TYPE PH1

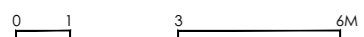
164 SQM / 1,765 SQFT  
(INCLUSIVE OF 12 SQM BALCONY,  
4 SQM PRIVATE LIFT LOBBY)

BLOCK 1  
#31-05

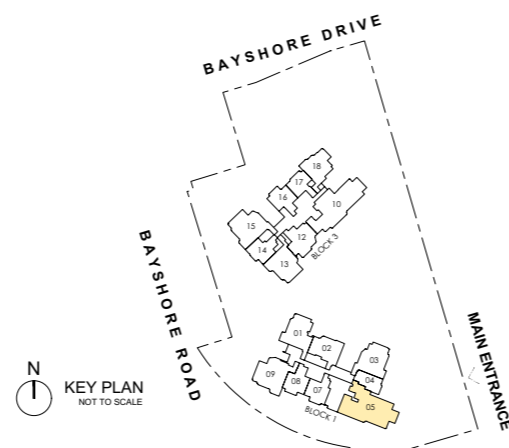


### LEGEND:

F	FRIDGE
W/D	WASHER AND DRYER
DB	DISTRIBUTION BOARD
ST	STORE
WC	WATER CLOSET
HS	HOUSEHOLD SHELTER
WN	WINE CHILLER
DW	DISHWASHER
AC	AIR-CONDITIONER (EXCLUDED FROM STRATA AREA)
RC	REINFORCED CONCRETE (EXCLUDED FROM STRATA AREA)
	VOID SPACE (EXCLUDED FROM STRATA AREA)
	HIGH VOID SPACE (EXCLUDED FROM STRATA AREA)
	WALLS NOT ALLOWED TO BE HACKED / ALTERED / DRILLED
	AIR CONDITIONING CONDENSING UNIT



ALL PLANS ARE SUBJECT TO CHANGES BY THE RELEVANT AUTHORITIES.  
MEASUREMENTS ARE APPROXIMATE ONLY AND SUBJECT TO FINAL SURVEY.  
INFORMATION ACCURATE AT POINT OF PRINTING.  
BP NO.: A1716-00045-2025-8P01 DATED 09-FEB-2026

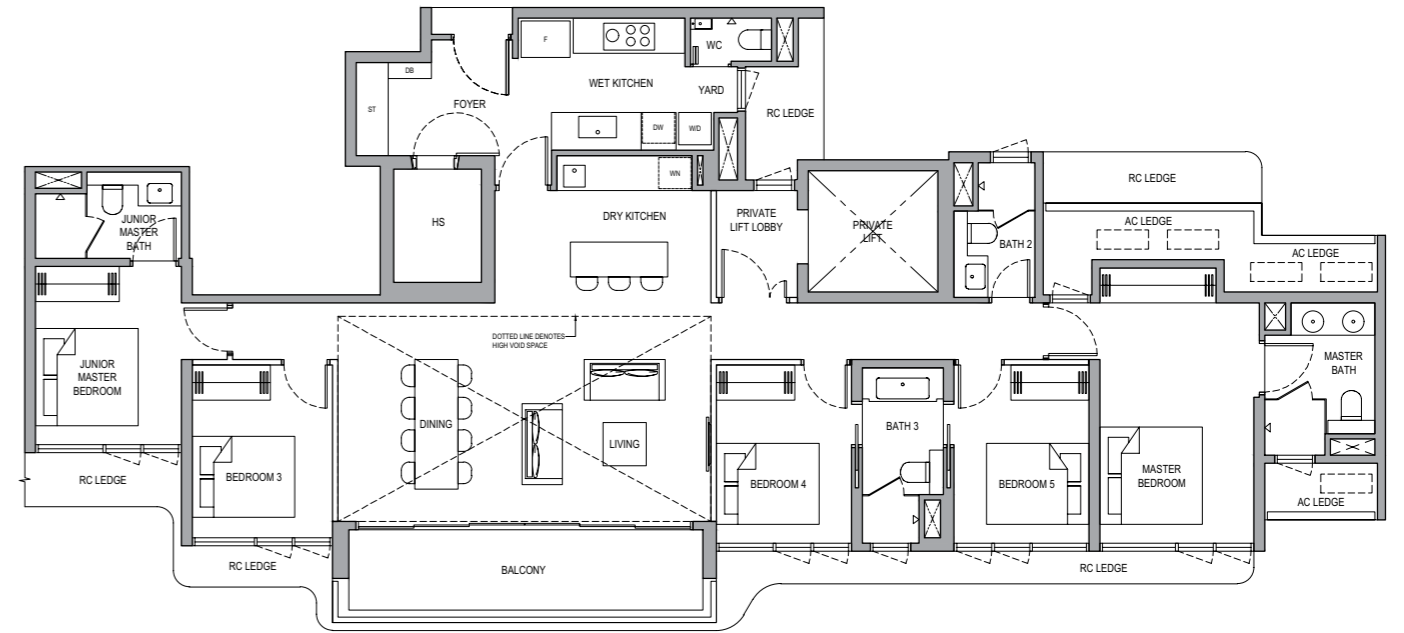


# PENTHOUSE 2

## TYPE PH2

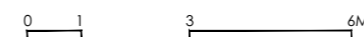
164 SQM / 1,765 SQFT  
(INCLUSIVE OF 12 SQM BALCONY,  
4 SQM PRIVATE LIFT LOBBY)

BLOCK 3  
#31-10



### LEGEND:

F	FRIDGE
W/D	WASHER AND DRYER
DB	DISTRIBUTION BOARD
ST	STORE
WC	WATER CLOSET
HS	HOUSEHOLD SHELTER
WN	WINE CHILLER
DW	DISHWASHER
AC	AIR-CONDITIONER (EXCLUDED FROM STRATA AREA)
RC	REINFORCED CONCRETE (EXCLUDED FROM STRATA AREA)
	VOID SPACE (EXCLUDED FROM STRATA AREA)
	HIGH VOID SPACE (EXCLUDED FROM STRATA AREA)
	WALLS NOT ALLOWED TO BE HACKED / ALTERED / DRILLED
	AIR CONDITIONING CONDENSING UNIT



ALL PLANS ARE SUBJECT TO CHANGES BY THE RELEVANT AUTHORITIES.  
MEASUREMENTS ARE APPROXIMATE ONLY AND SUBJECT TO FINAL SURVEY.  
INFORMATION ACCURATE AT POINT OF PRINTING.  
BP NO.: A1716-00045-2025-8P01 DATED 09-FEB-2026

